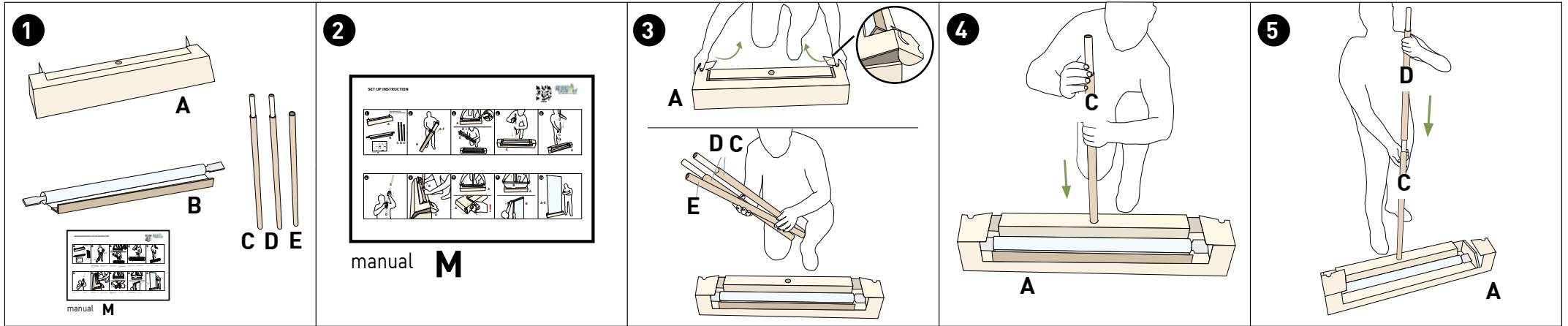


SET UP INSTRUCTION

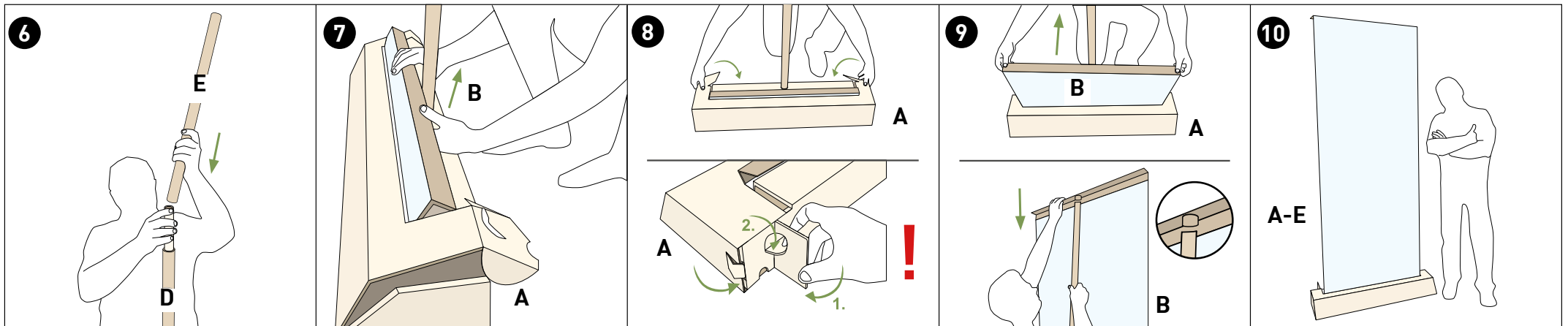


Please follow the manual step by step!

Open the side flap care-fully. Take out the tubes C, D and E.

Assemble the pole by starting with part C

Assemble part D with part C.



Put part E last on top of D.

Pull the top part of the banner just a few cm out of the base.

Close the side flaps again, fold out the stabilizers and fix them.

Pull out the banner upwards and fasten it.

Done.